

Cherokee National Forest Landscape Restoration Initiative



Current Conditions
Departure from NRV

Cherokee National Forest Landscape Restoration Initiative

Ecological Departure Summary

Ecological System	% Departure	Acres (rounded to next 10)
Cove Forest	48	102,980
Montane Red-Chestnut Oak	47	71,850
Dry Oak Forest	61	65,880
Dry-Mesic Oak Forest	54	40,770
Low-Elevation Pine Forest	90	23,810
Montane Pine Forest & Woodland	82	21,840
Northern Hardwood Forest	13	11,640
Riparian & Floodplain Systems	59	2,550
Spruce-Fir Forest	82	2,240
Total Acres		343,560

Cherokee National Forest Landscape Restoration Initiative

Quick Snapshot - I

- ❑ The Oak and Cove Forest systems – which make up over 80% of the landscape – are *moderately departed* from NRV
- ❑ The two Pine systems are *highly departed*
- ❑ Spruce-Fir is also *highly departed*
- ❑ Northern Hardwood has *very low departure*



Cherokee National Forest Landscape Restoration Initiative

Quick Snapshot II

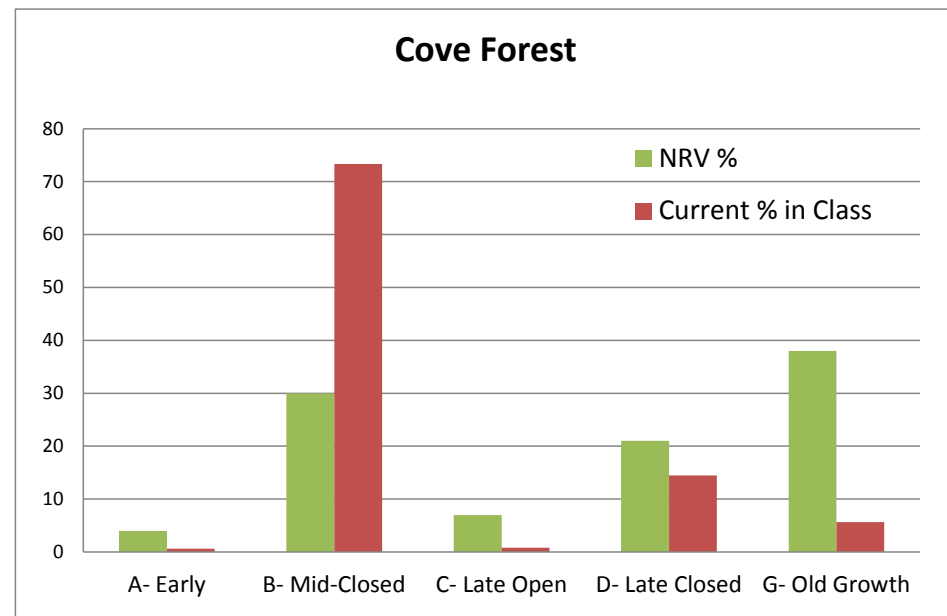
- ❑ In general, a substantial over-abundance of late-seral, closed canopy in oak and pine forests
- ❑ Current shortfall of old growth oak forests
- ❑ Shortfall of early succession in all systems
- ❑ Altogether ~7% Uncharacteristic vegetation



Cherokee National Forest Landscape Restoration Initiative

Cove Forest

- ❑ Largest ecological system – 103,000 acres, or 30% of the landscape
- ❑ Moderately departed from NRV
- ❑ Overabundance of mid-seral, closed overstory
- ❑ Substantial current shortfall of old growth



Cherokee National Forest Landscape Restoration Initiative

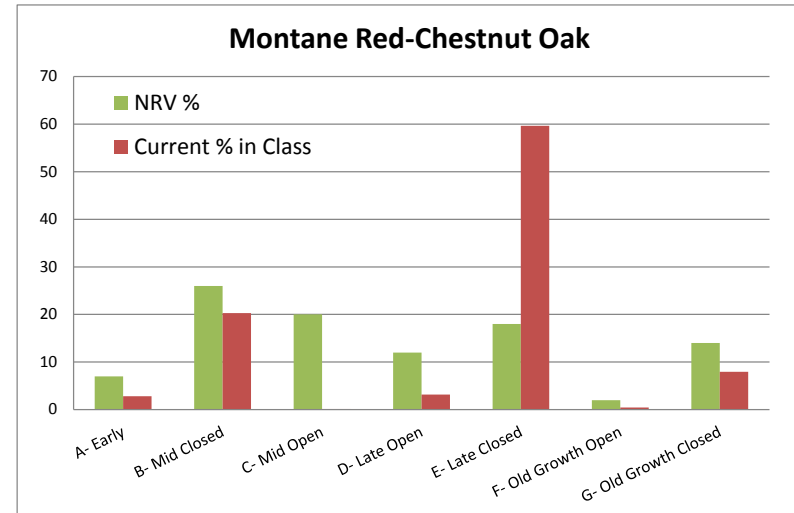
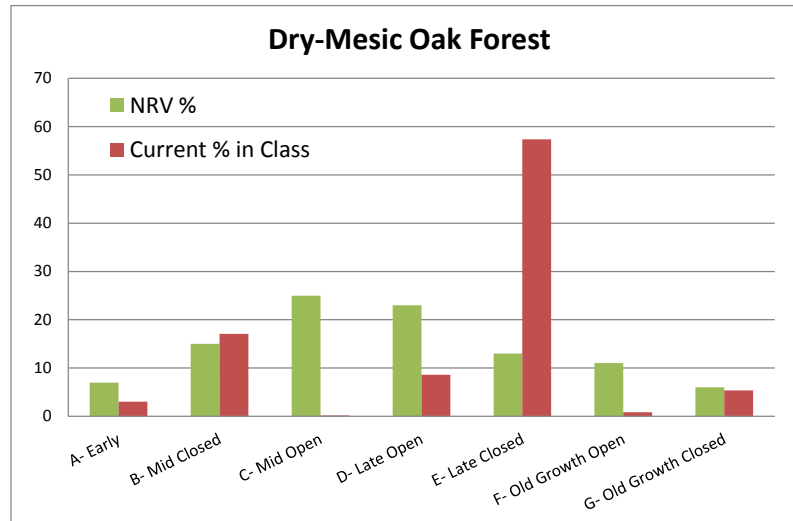
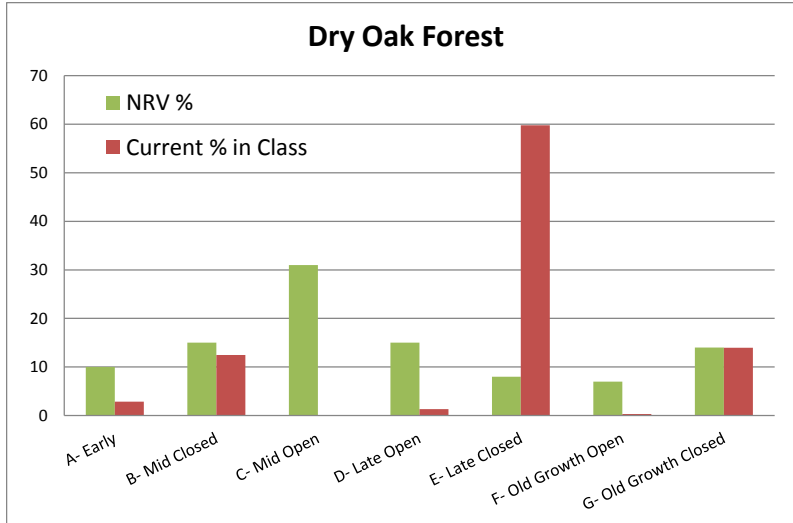


Oak Forests

Dry Oak, Dry-Mesic Oak, Montane Red-Chestnut Oak

- ❑ Collectively make up over 50% of the landscape
- ❑ Moderately departed from NRV
- ❑ Overabundance of late-closed succession class
- ❑ Shortfall of old growth classes, especially open canopy

Cherokee National Forest Landscape Restoration Initiative



Cherokee National Forest Landscape Restoration Initiative

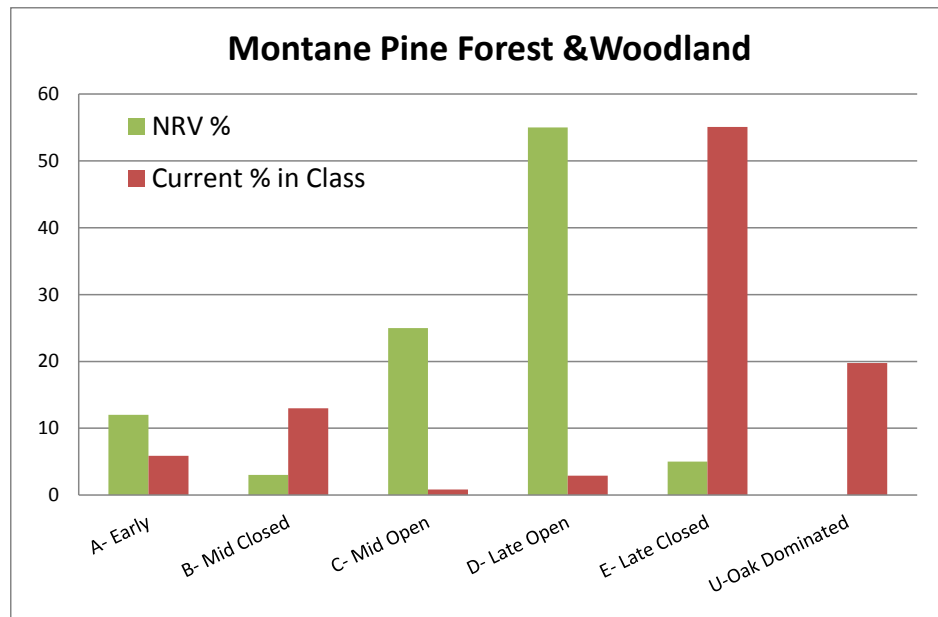
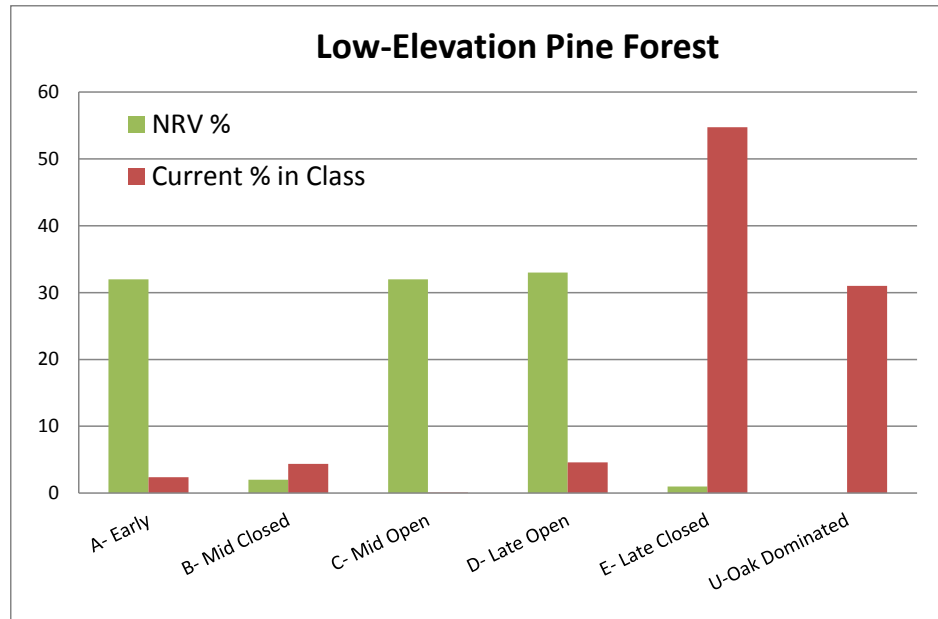
Pine Forests & Woodland

Low-Elevation Pine & Montane Pine

- ❑ Together make up 13% of the landscape
- ❑ Highly departed from NRV
- ❑ Overabundance of late-closed succession class
- ❑ Plus oak-dominated forest types
- ❑ Shortfall of late-open succession class
- ❑ Shortfall of early succession low-elevation pine



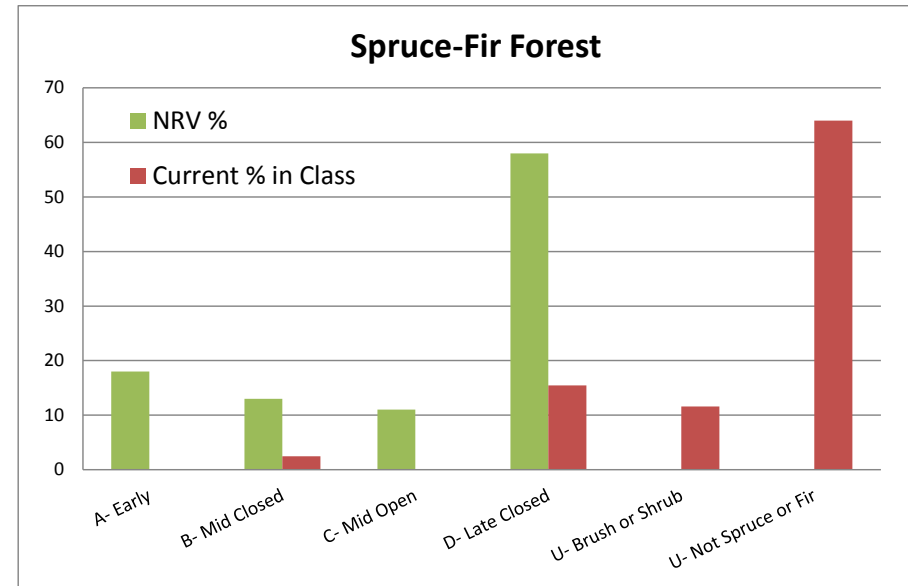
Cherokee National Forest Landscape Restoration Initiative



Cherokee National Forest Landscape Restoration Initiative

Spruce-Fir Forest

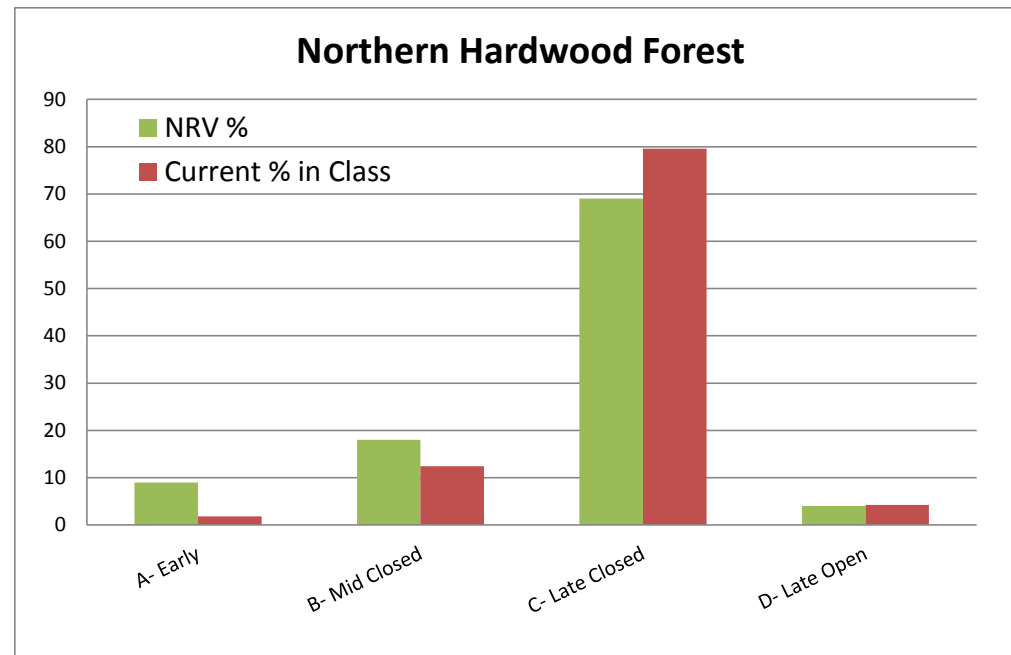
- ❑ Small system – 2,000 acres, but highly departed from NRV
- ❑ Almost 75% Uncharacteristic forest type, mostly forest types NOT red spruce-fraser fir or red spruce-northern hardwood
- ❑ Virtually no early or mid-succession spruce-fir



Cherokee National Forest Landscape Restoration Initiative

Northern Hardwood Forest

- ❑ Good news!
- ❑ 12,000 acres – very low departure from NRV



Cherokee National Forest Landscape Restoration Initiative

Riparian & Floodplain Systems

- ❑ 2,500 acres, moderately departed from NRV
- ❑ Shortfall of early succession and open canopy vegetation classes

